



FREESCAN COMBO Series



Metrology-Grade Accuracy



Versatile Dual Light Scanning



Multiple Scanning Modes

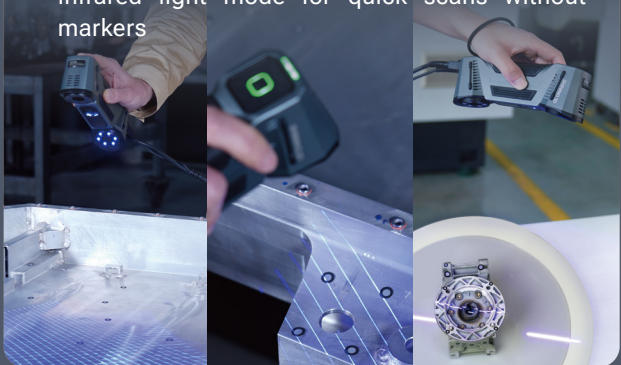


Lightweight and Compact



Four 3D Scanning Modes to Cover All Types of Workpieces

- Multiple-line mode with 26 (FreeScan Combo) or 50 (FreeScan Combo+) laser lines for overall scans
- Fine scanning mode with 7 parallel laser lines to acquire intricate details
- Deep hole scanning mode with 1 single laser line
- Infrared light mode for quick scans without markers



Blue Laser & Infrared Light

An innovative combination of blue laser and infrared light ensures accurate results in various scenarios, improving both efficiency and quality.



Powerful and Ergonomic

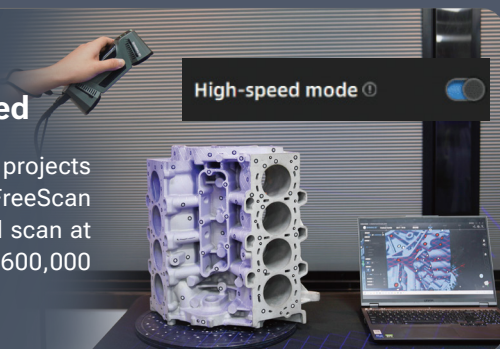
The FreeScan Combo Series boasts an ergonomic, compact, and lightweight design.

The optimized camera angle makes it more suitable for working in narrow and complex environments, allowing for fast data capture in seams.



Fast Scan Speed

Its multiple line mode projects up to 50 laser lines (FreeScan Combo + version) and scan at speeds of up to 3,600,000 points/sec



A Wise Choice for Metrology

The FreeScan Combo Series' laser scanning modes can achieve industrial-grade accuracy of 0.02 mm*, making it ideal for metrology applications.



*Based on VDI/VDE 2634, sphere-spacing error is assessed with traceable length artifacts and markers by measuring these at different locations and orientations within the working volume, in the accuracy lab certified with ISO/IEC 17025:2017 under environmental conditions: temperature 20 ± 0.5°C; humidity 40 ~ 60% RH.



Infrared Light Scanning

For feature-rich workpieces, the infrared light scanning mode is ideal. It captures parts quickly and efficiently without the need for markers.



SPECIFICATIONS



Model	FreeScan Combo Series		
Scan modes	Laser		Infrared
Light source	FreeScan Combo+	FreeScan Combo	VCSEL
	50 laser lines	26 laser lines	
	7 parallel laser lines 1 single laser line		
Scan speed	3,600,000 points/s	1,860,000 points/s	2,250,000 points/s
Working distance	300 mm / 200 mm		300 mm
Scan accuracy	Up to 0.02 mm		Up to 0.05 mm
Volumetric accuracy ⁽¹⁾	0.02 + 0.033 mm/m		0.05 + 0.1 mm/m
Scan depth	360 mm		1240 mm ⁽²⁾
Max. FOV	520 x 510 mm		600 x 600 mm
Point distance	0.05 ~ 10 mm		0.1 ~ 3 mm
Laser class	Class II (eye-safe)		
Connectivity	USB 3.0		
Dimensions	193 x 63 x 53 mm		
Weight	620 g		
Power input	12V, 5.0A		
Operating temperature range	-20 ~ 40°C		
Operating humidity range	10 ~ 90%		
Certifications	CE, FCC, ROHS, WEEE, KC, FDA, UKCA, IP50, TELEC, TISAX		
Accuracy certification	VDI/VDE 2634 Part3, ISO 10360 (certificated in ISO 17025 certificated accuracy lab)		
Recommended computer configuration	OS: Windows 10 Pro (64-bit) / Windows 11 Pro (64-bit); CPU: 13th Gen Intel (R) Core (TM) i7-13650HX 2.6 GHz or above; Video card: NVIDIA GeForce RTX 4060 or above Video memory: 8GB or above; RAM: 64GB or above, DDR5 dual-channel; USB port: USB 3.0		

Notice: SHINING 3D reserves the right to modify or adjust above specifications and pictures.

(1): Based on VDI/VDE 2634 part 3 standard. Sphere-spacing error is assessed with traceable length artefacts and markers by measuring these at different locations and orientations within the working volume.

(2): Scan depth can be manually adjusted in Infrared scan mode. Maximum is 1240mm.

SHINING 3D Tech Co., Ltd.

- Hangzhou, China
P: 400-0799-666
No. 1398, Xiangbin Road, Wenyan,
Xiaoshan, Hangzhou, Zhejiang,
China, 311258

SHINING 3D Technology GmbH.

- Stuttgart, Germany
P: +49-711-28444089
Breitwiesenstraße 28, 70565, Stuttgart, Germany
- Barcelona, Spain
Calle 27, 10-16, Sector BZ, 08040 Barcelona, Spain

SHINING 3D Technology Japan Inc.

- Tokyo, Japan
Tradepia Odaiba 10F, 2-3-1 Daiba, Minato-ku,
Tokyo, 135-0091 Japan
TEL: 03-6380-7622

SHINING 3D (HK) COMPANY LIMITED.

- Hong Kong, China
P: 00852-23348468/23348568
Room 303A, 3/F, Tower 2, Enterprise Square Phase 1,9
Sheung Yue Road, Kowloon Bay, Kowloon, Hong Kong

SHINING 3D Technology Inc.

- California, USA
P: +1415-259-4787
2450 Alvarado St #7, San Leandro, CA 94577
- Florida, USA
Orange Grove Commerce Park 2807 W Busch Blvd



Facebook



Instagram



LinkedIn



YouTube